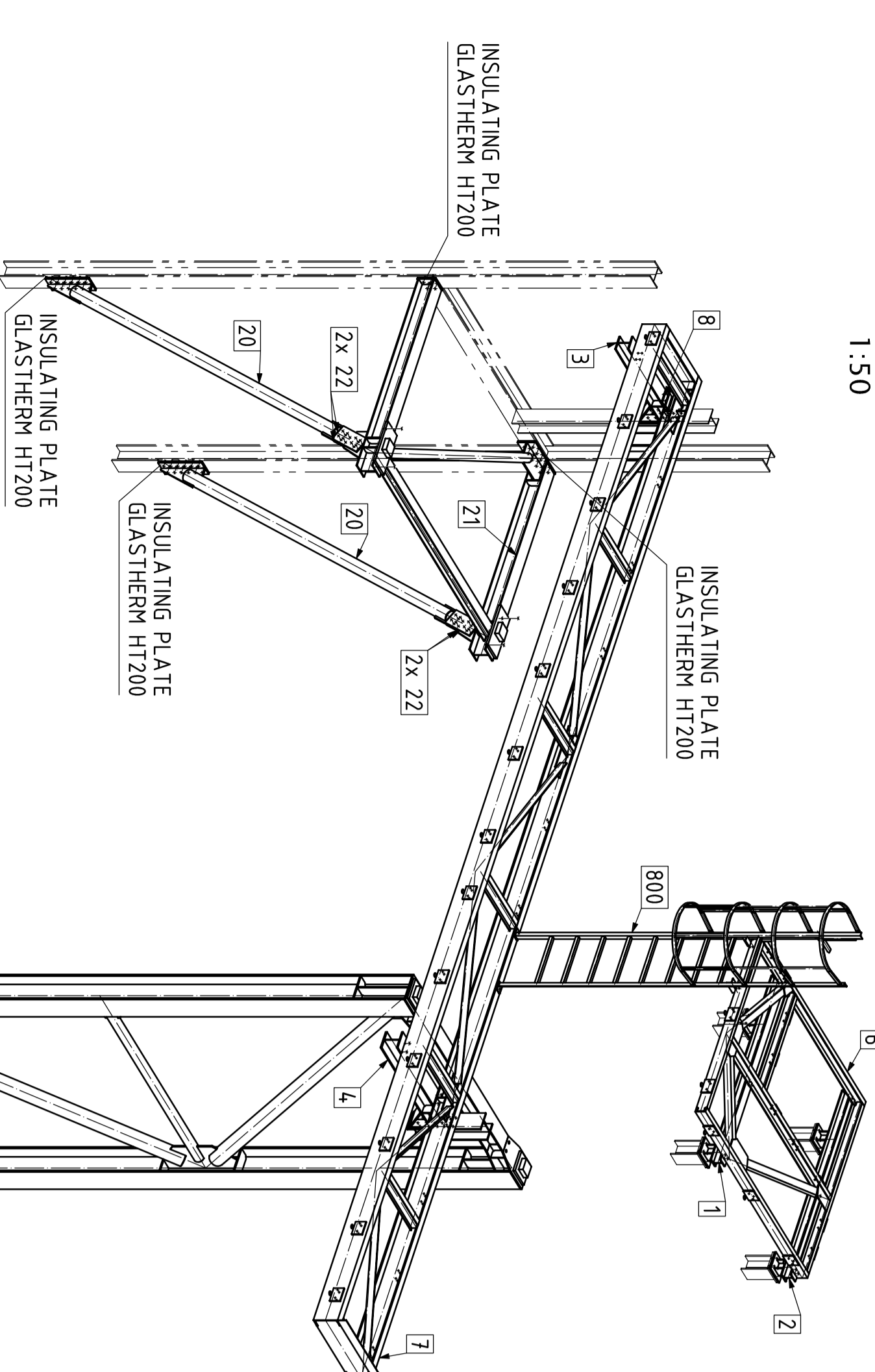
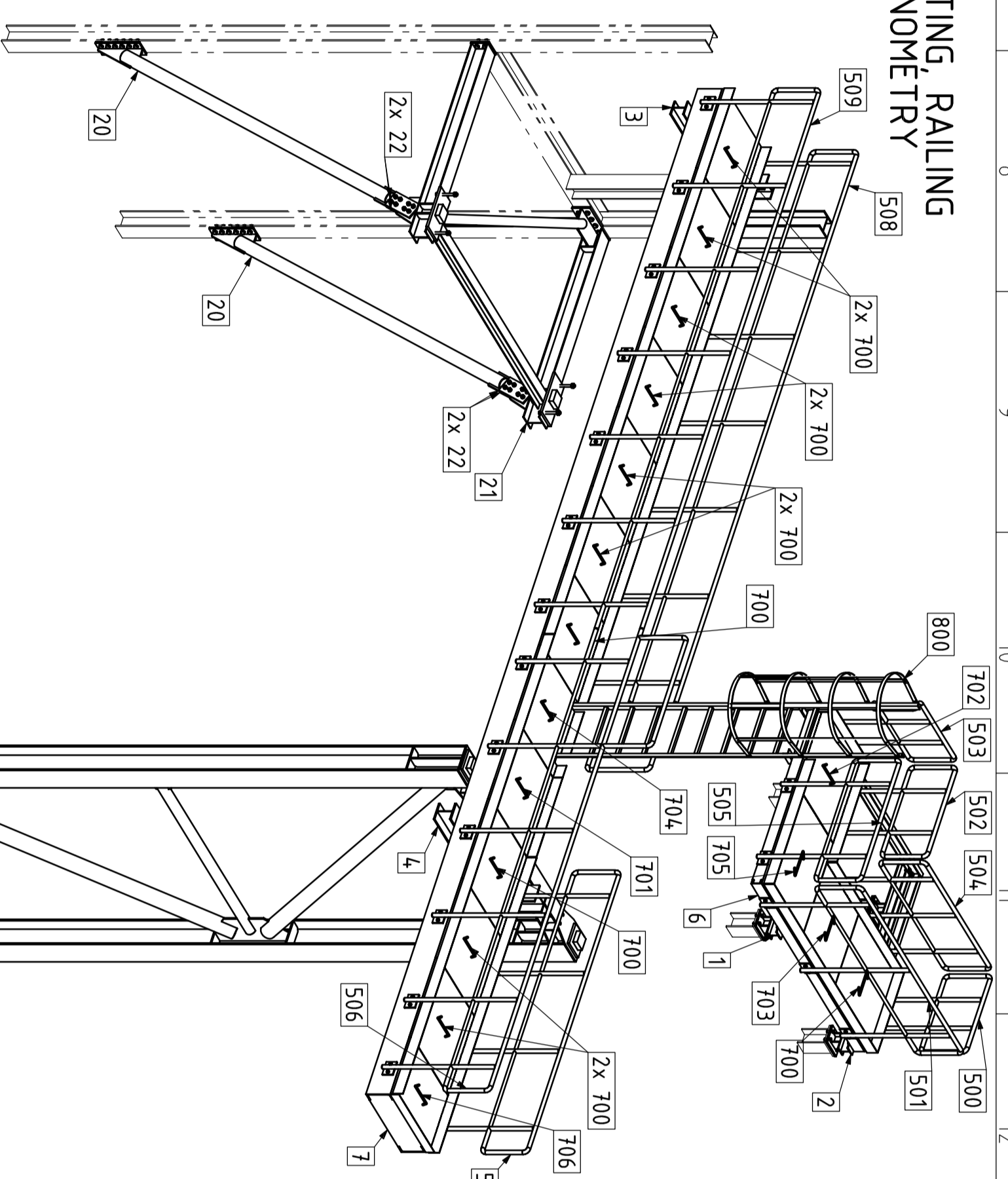


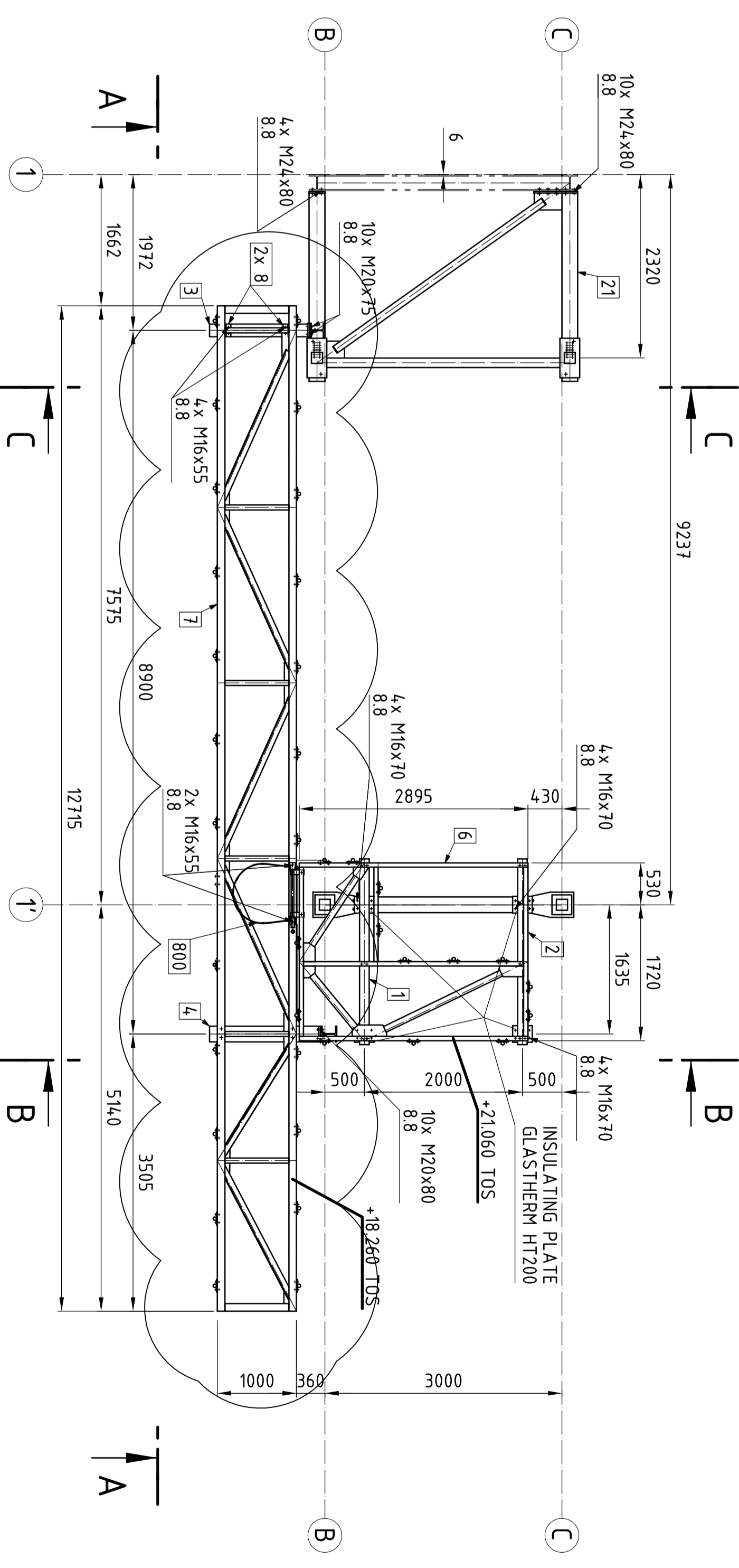
STEEL STRUCTURE
AXONOMETRY
1:50



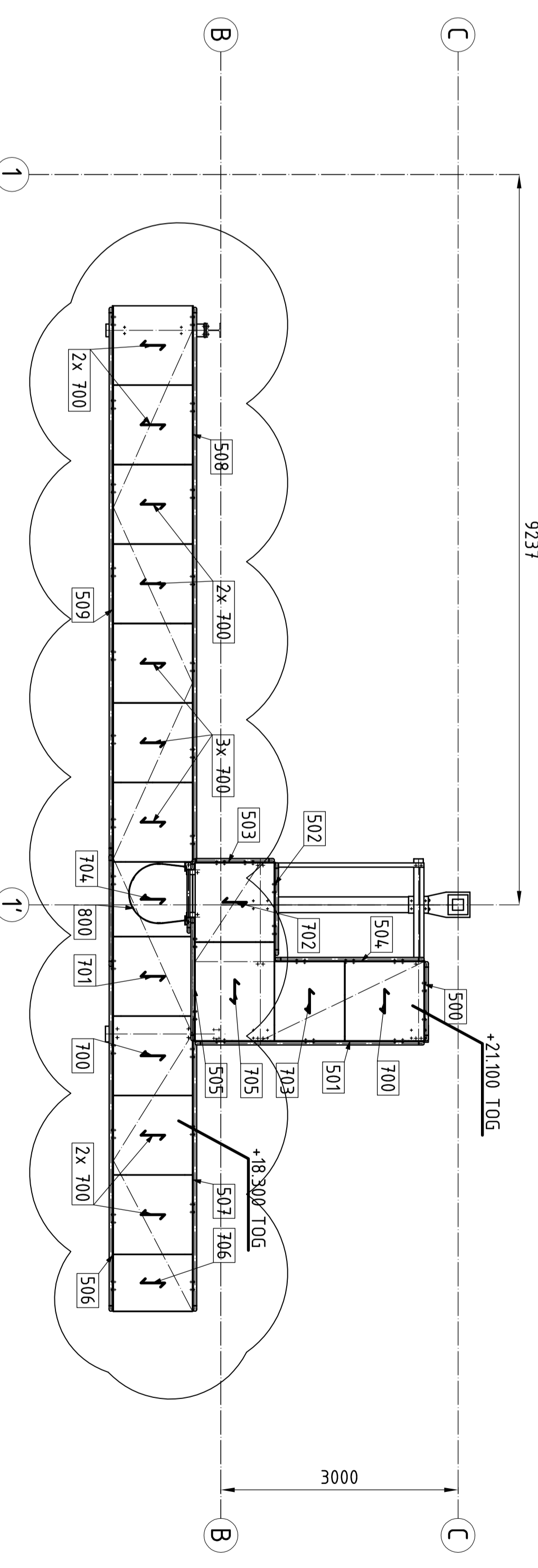
GRATING RAILING
AXONOMETRY
1:50



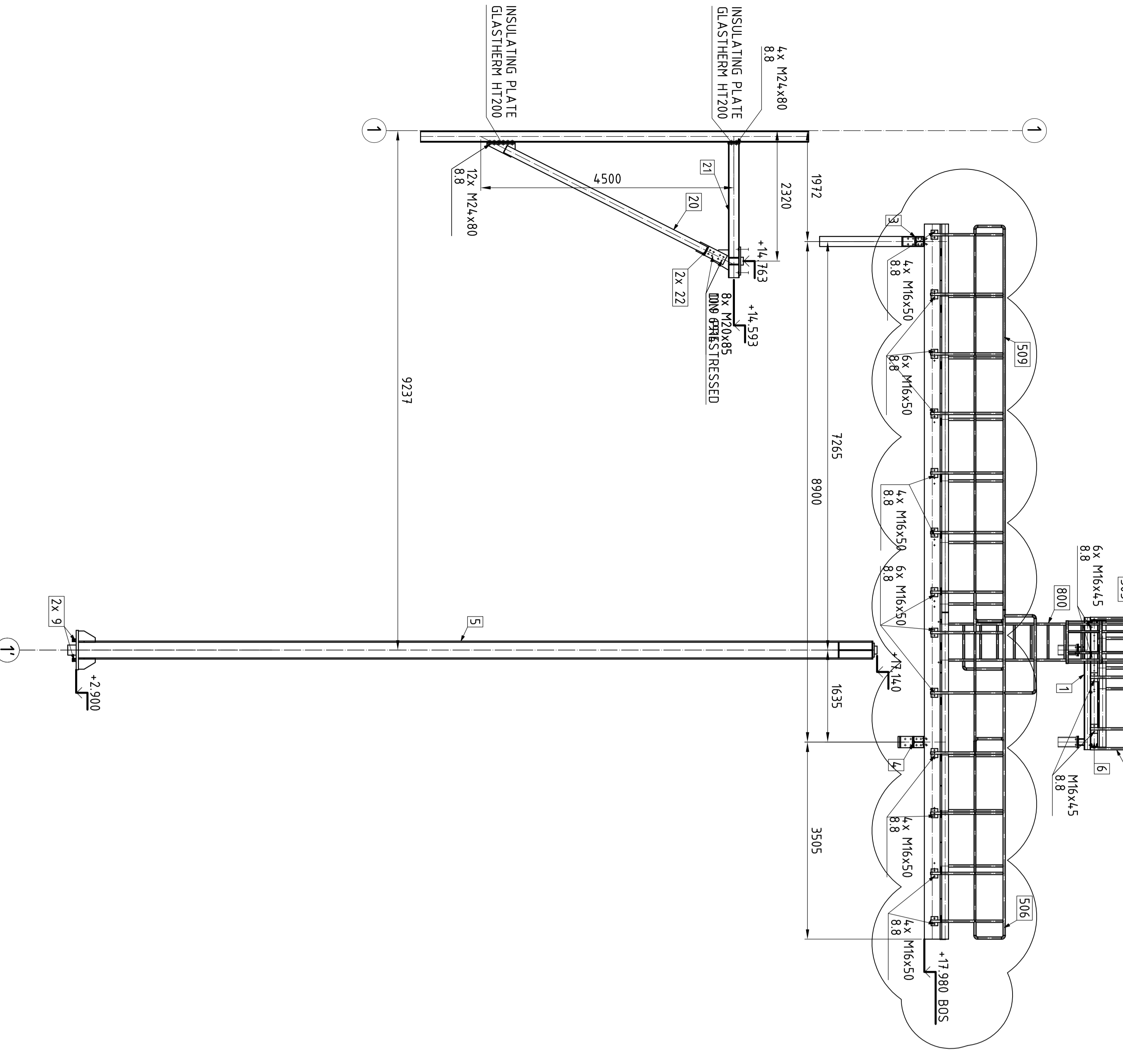
STEEL STRUCTURE
LEVEL +18,260 , +21,060 TOS
1:50



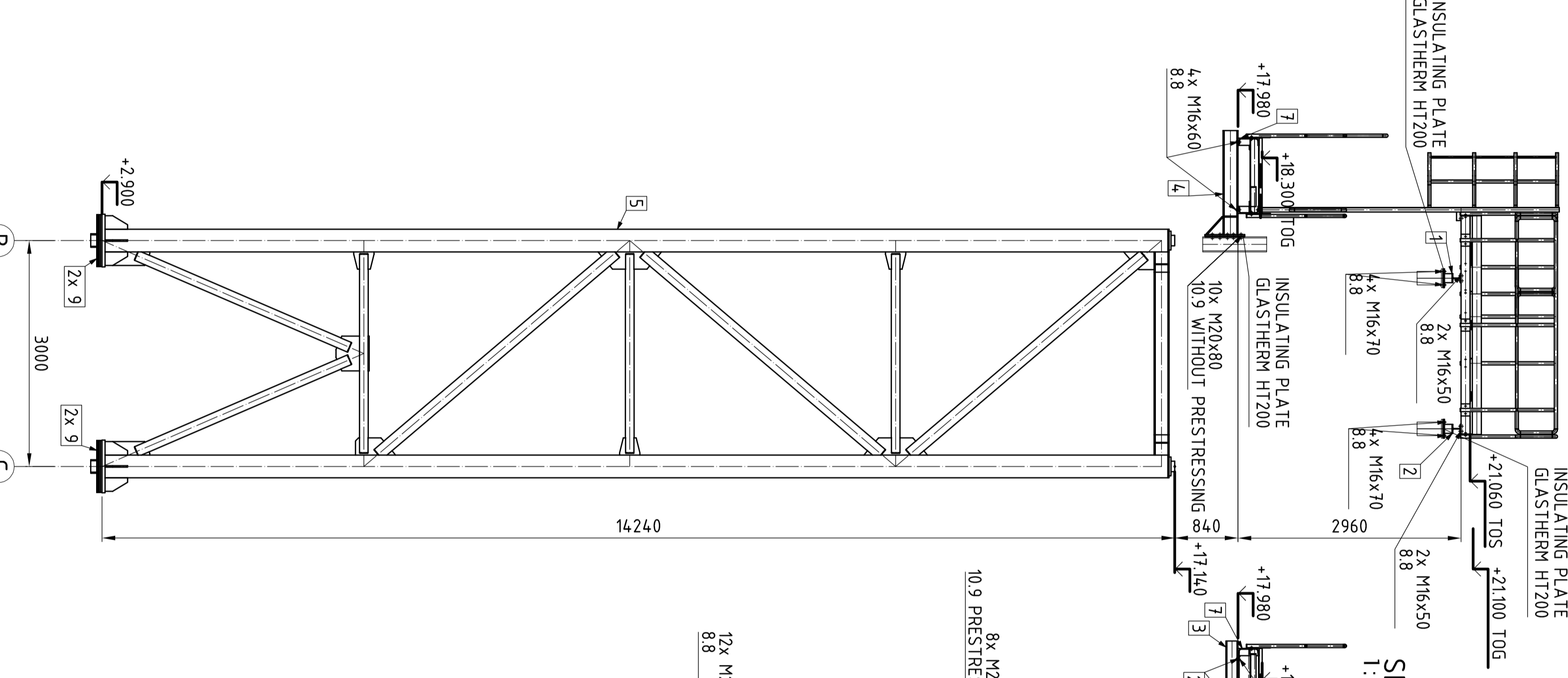
GRATING RAILING
LEVEL +18,300 , +21,100 TOS
1:50



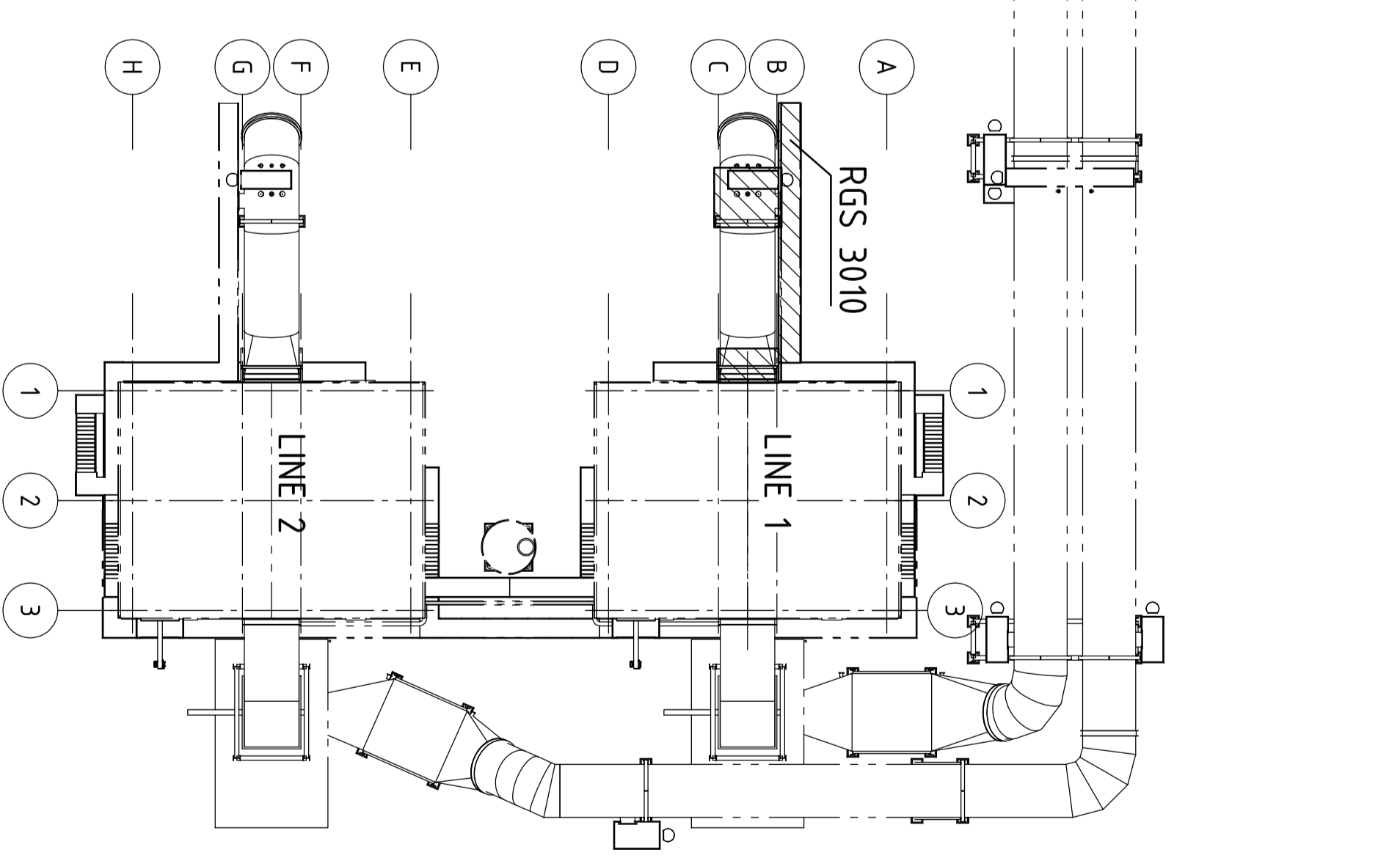
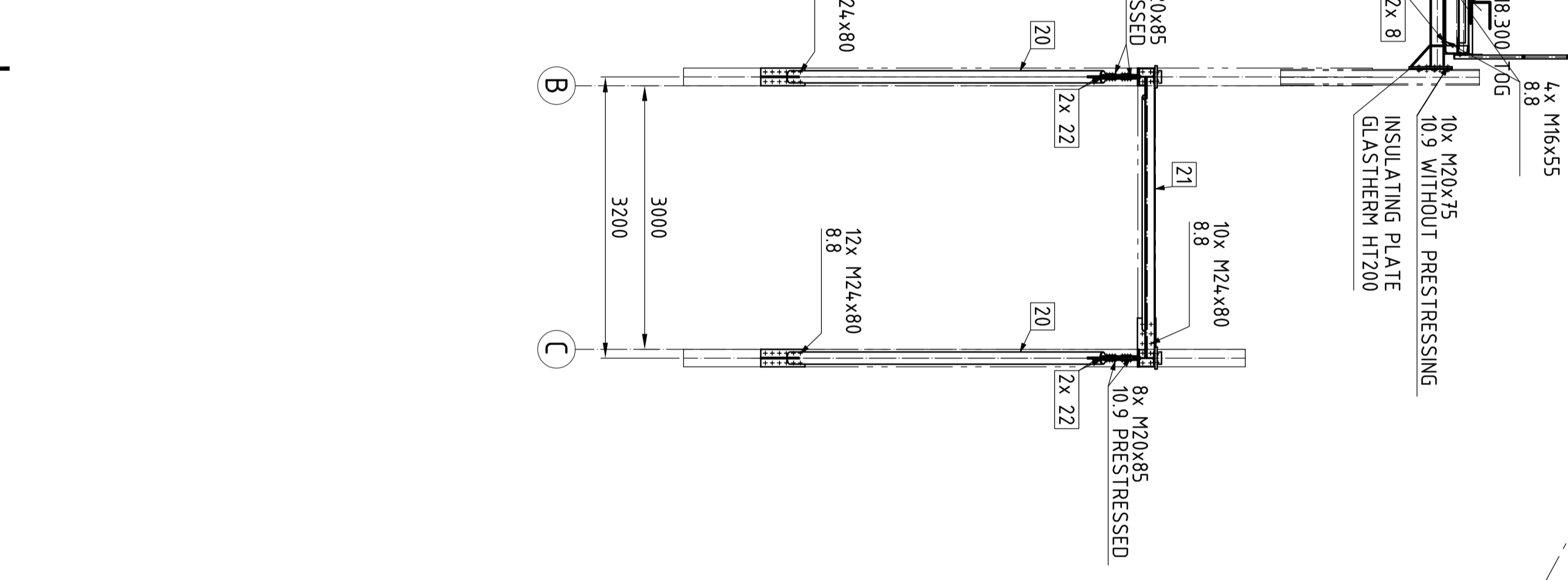
SECTION A-A
1:50



SECTION B-B
1:50



SECTION C-C
1:50



LEGEND:
TOS - TOP OF GRATE
TOS - TOP OF STEEL
BOS - BOTTOM OF STEEL

REFERENCE DRAWINGS

I.	DS-3000-ENV	LINE 1, 2 - ARRANGEMENT
II.	AL-0001-ENV	FOUNDATION LOAD PLAN
III.	BF-0002-ENV	FOUNDATION DETAILS

ALL WELDS IN THIS DRAWING ACCORDING TO DIN EN 2553 UNLESS OTHERWISE SPECIFIED

ADMISSIBLE DIMENSIONAL DIFFERENCES DEGREE TOLERANCES ARE NOT SPECIFIED UNLESS OTHERWISE SPECIFIED

GENERAL TOLERANCES FOR WELDED CONSTRUCTIONS ACCURACY TO DIN EN ISO 13920 DEGREE OF ACCURACY "B"

WELDS AS PER DIN EN 25817 CLASS OF WELD QUALITY: C.

PAINTING SYSTEM ACCORDING TO PRODUCT SPECIFICATION: 0013B-MG-004-ENV-003

LOCATION: OUTSIDE CSI

CONNECTING COMPONENTS (BOLTS, NUTS, etc.) - HOT GALVANIZED MATERIAL

- All bolts - 8.8 without prestressing

- Some bolts - 10.9 are prestressed (see tab.)

LABEL TEXT STRUCTURE
1-RGS-3010-YY
(LINE NUMBER/IDENT. CODE/WORKING METHOD/DATE NO.)

Label example for Part 05
1-RGS-3010-05

RELEVANT FORCE OF ATTRACTION PRESTRESSING

ROW	PRESTRESSING FORCE	PRESTRESSING FORCE OF THE BOLTS	TENSION PERCENT PRESTRESSING	ATTRACTIVE MOMENT M ₁	ATTRACTIVE MOMENT M ₂	LIBERATED
1	103	100	100	120	120	
2	112	50	45	350	350	
3	116	100	85	450	600	
4	122	160	130	650	900	
5	124	200	160	800	1100	
6	127	290	230	1250	1650	
7	139	510	360	2200	2700	
8	148	510	340	2800	3800	

FOR ALL BOLTS TO BE PRESTRESSED WITH 10 x 14 HV