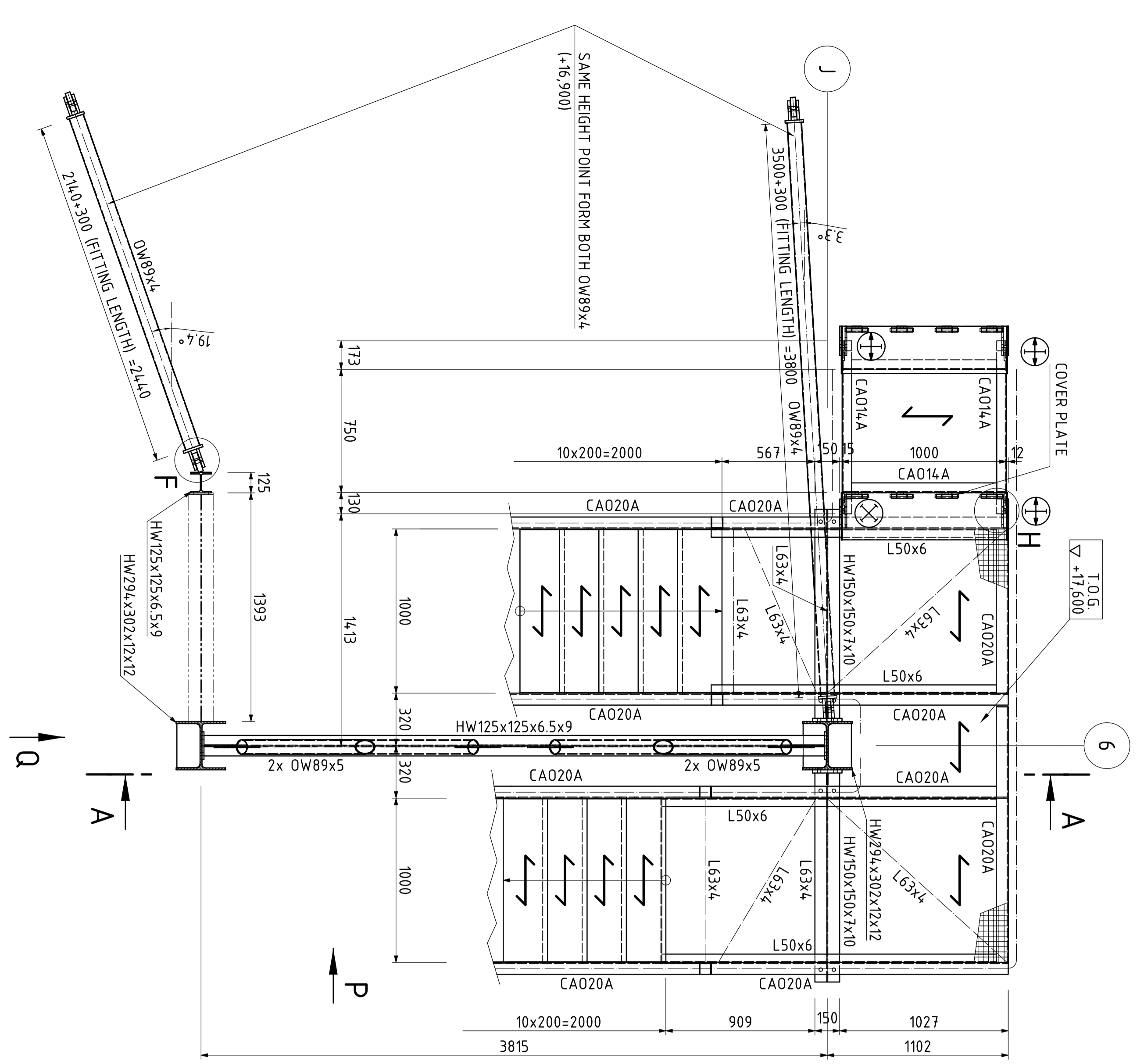


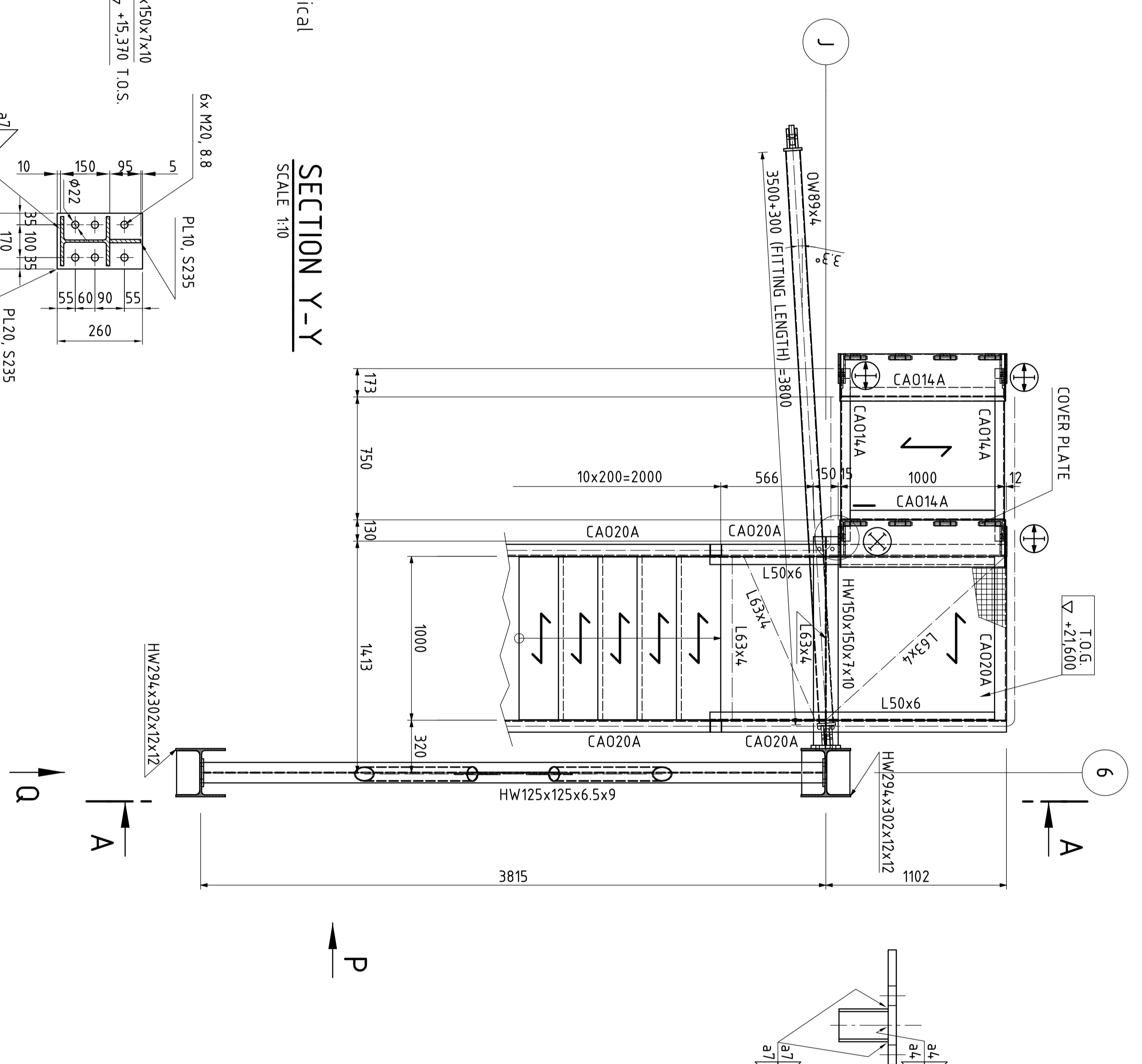
LEVEL +17.600 T.O.G.

SCALE 1:20



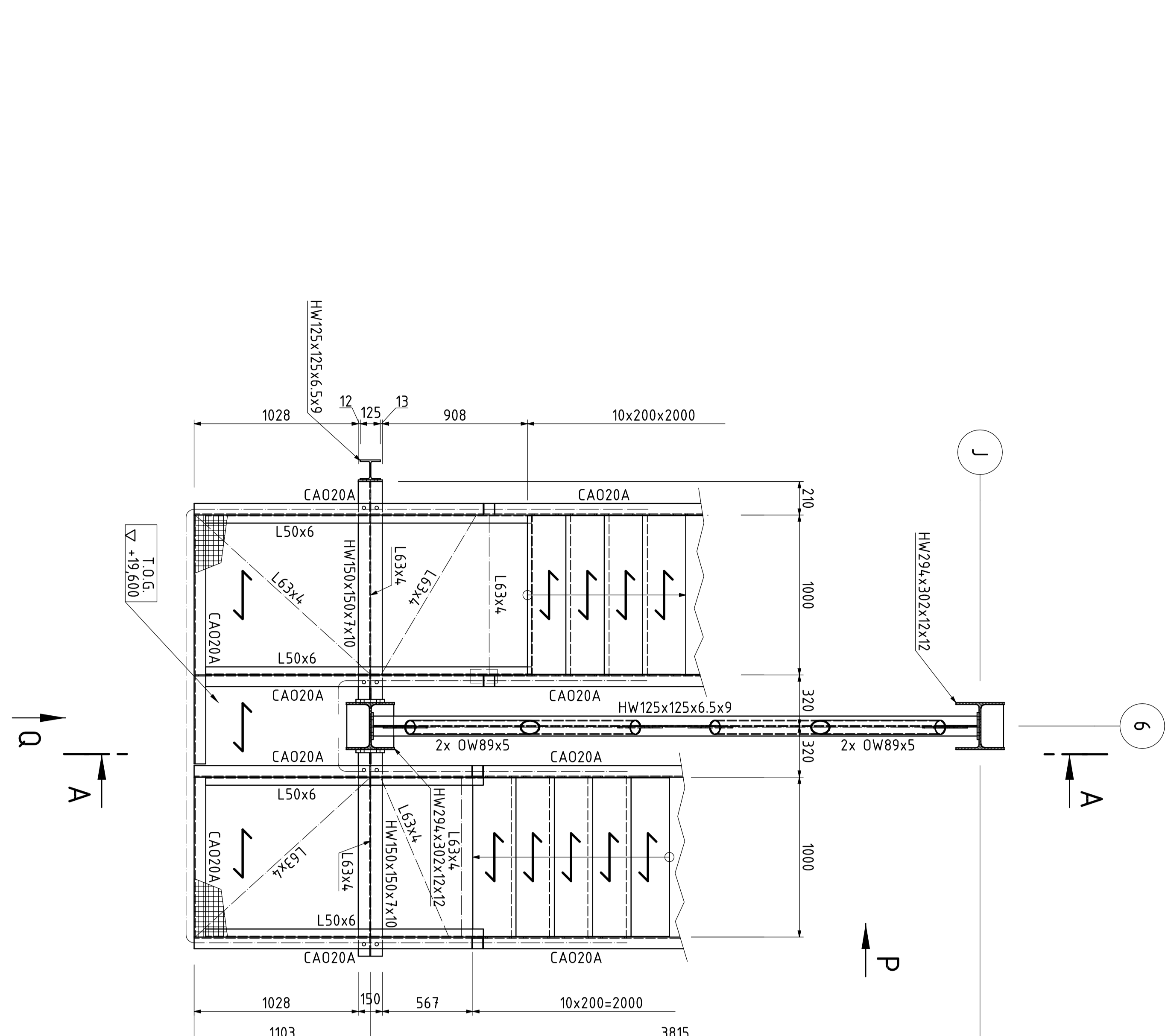
LEVEL +21.600 T.O.G.

SCALE 1:20

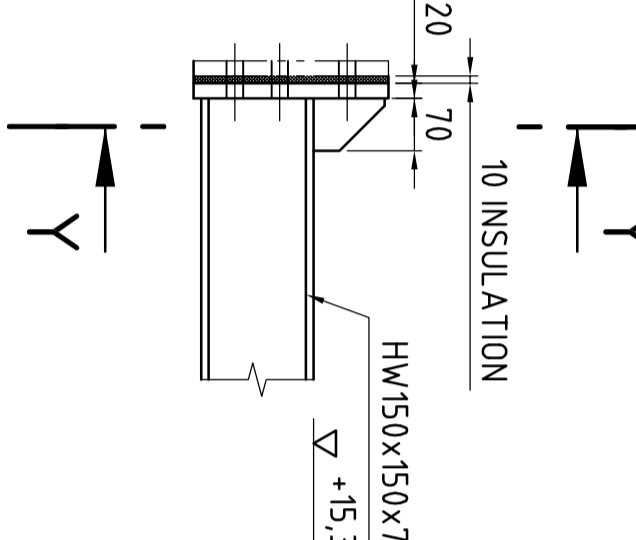


LEVEL +19.600 T.O.G.

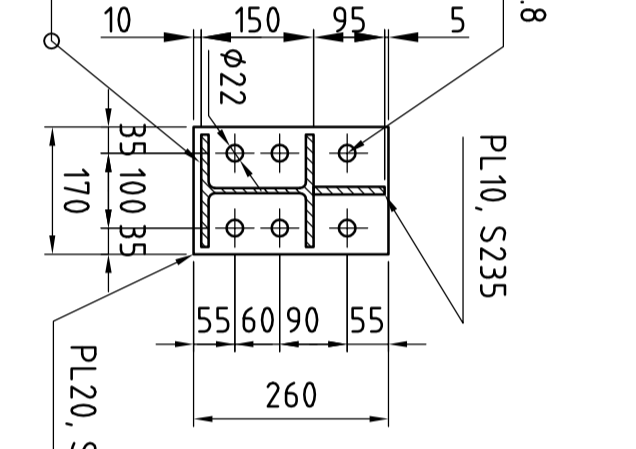
SCALE 1:20



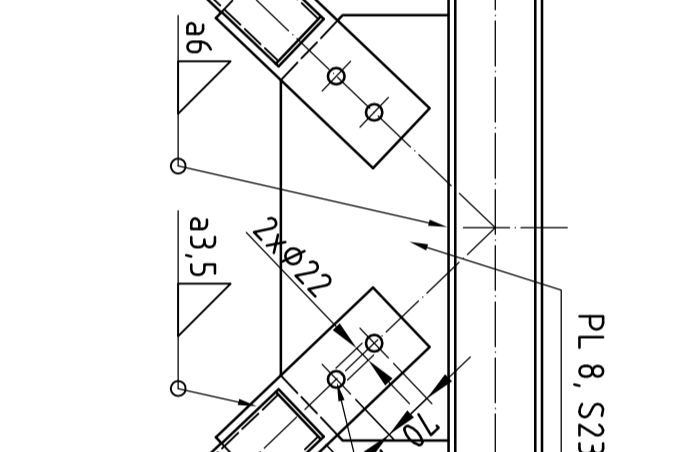
DETAIL E typical
SCALE 1:10



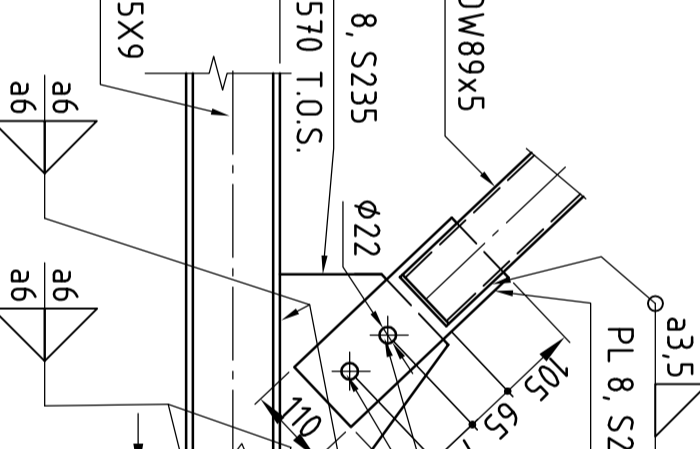
SECTION Y-Y
SCALE 1:10



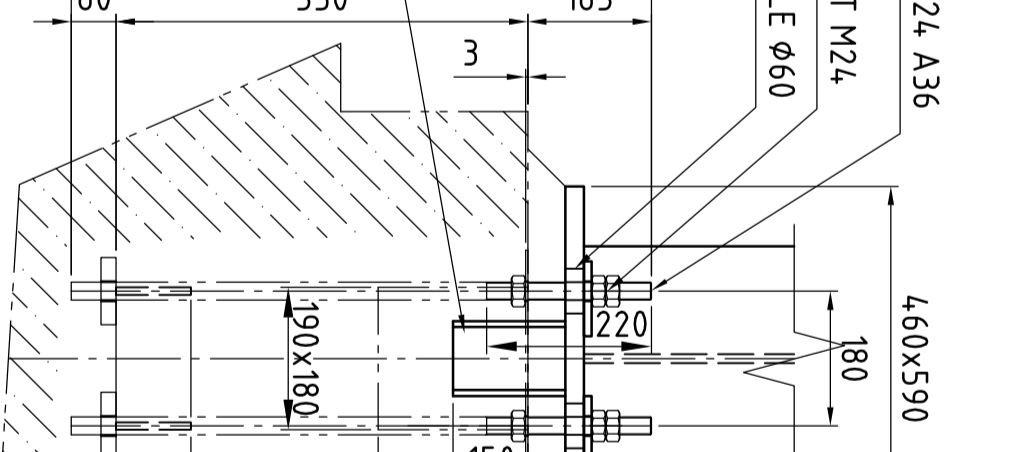
DETAIL D' typical
SCALE 1:10



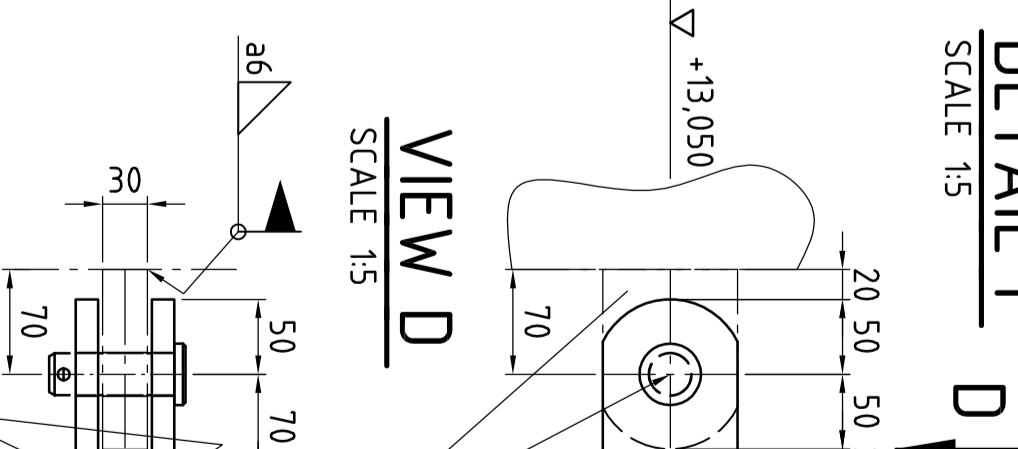
DETAIL D typical
SCALE 1:10



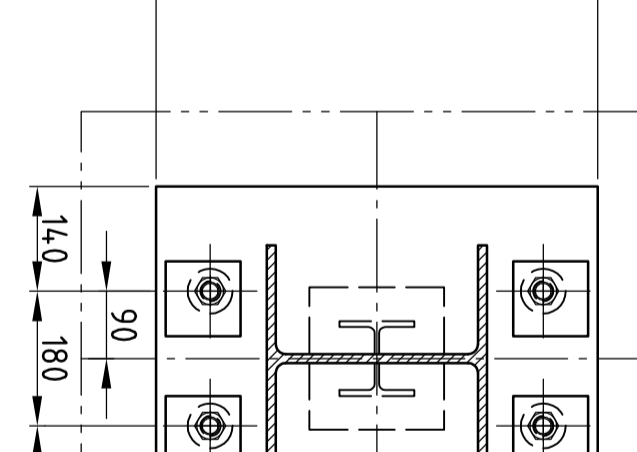
DETAIL G
SCALE 1:10



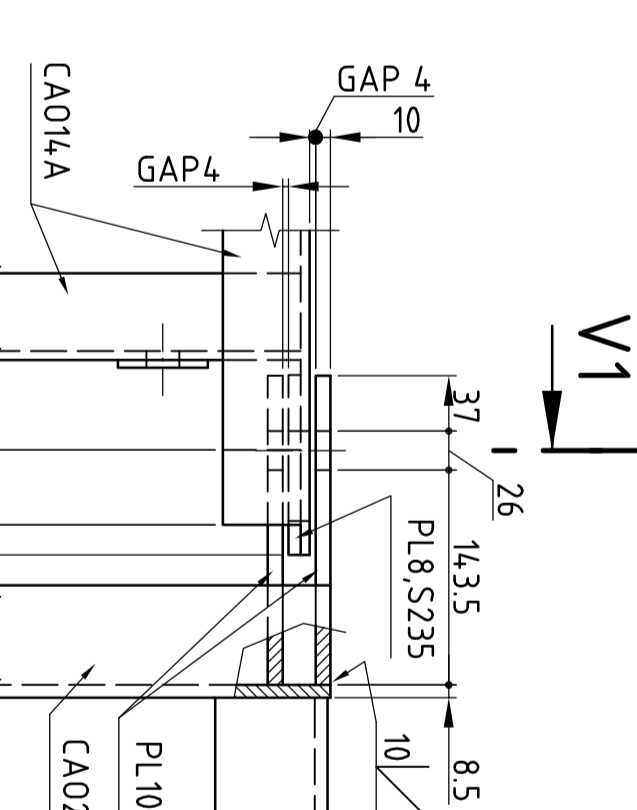
DETAIL F
SCALE 1:5



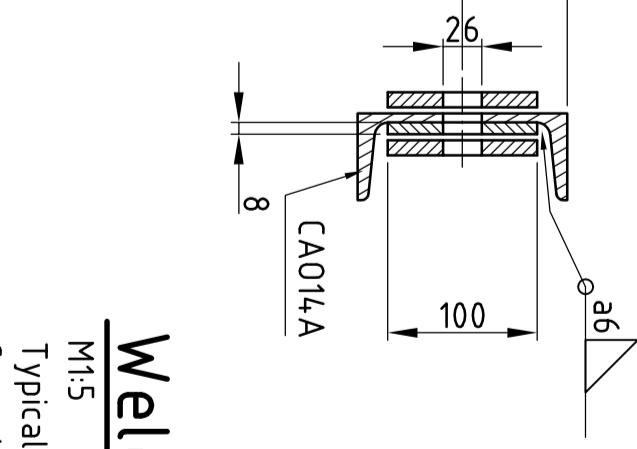
SECTION Z-Z
SCALE 1:10



DETAIL H typical for sliding point
SCALE 1:5

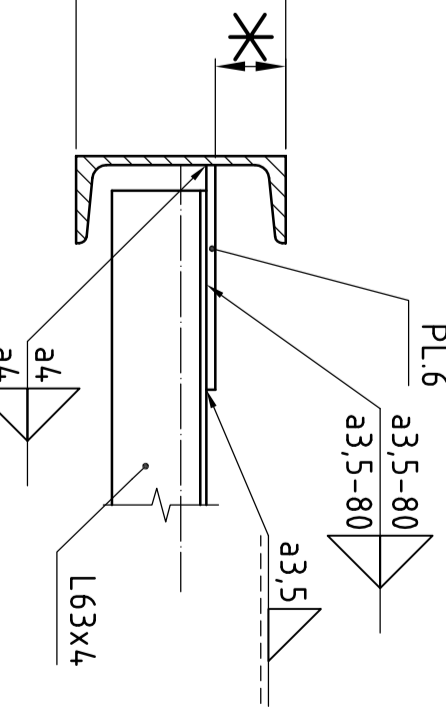


SECTION V1-V1
SCALE 1:5



Welding of Diagonals

BOLTED CONNECTIONS SHALL CONFORM TO THE REQUIREMENTS OF AISC MANUALL OF STEEL CONSTRUCTION AND TO NORMS FOR BOLTS, NUTS, WASHERS ETC.



NOTE: THE DETAIL DRAWINGS OF STEEL STRUCTURE HAS TO BE VERIFIED BY STATIC CALCULATION ALL CONNECTING ELEMENTS WITHOUT DIMENSIONS (GUSSET PLATES, NUTS, RIBS) ARE INFORMATORY HERE ONLY.

NOTE: CONNECTING COMPONENTS (BOLTS, NUTS, GRATE ETC) - HOT GALVANIZED

NOTE: Handrailing and stairs are designed by drawing 79428 DW-100-105-A0 Handrailing and stairs



CONNECTION OF SHAPES
- ARTICULATED
- FIXED

Built-up members: Commercial rolled steel beams of adequate size are preferred over Built-up members in construction of steel structures. If Built-up members are used, consisting of splicing a series of plates or welding cover plates to the flanges, the welds shall be designed and proportioned to resist the bending and shear stresses in the flanges. The welds shall not be discontinuous in the loads areas, shall comply with the design documentation, and shall be made in workshops by qualified welders and all inspected visually and with NDT. For best practice in the design and usage of Built-up members of all types, refer to the recommendations of American Institute for Steel Construction. Specifications for Structural Steel Buildings 360.

READ THIS DRAWING WITH: 79428 DW-K00-100-A0, 79428 DW-K00-101-A0, 79428 DW-K00-102-A0, 79428 DW-K00-103-A0, 79428 DW-K00-105-A0

REFERENCE DRAWINGS

DRAWING No.	TITLE
I. 79428 DW-K00-100-A0	STARTOWER - AXONOMETRY
II. 79428 DW-K00-101-A0	STARTOWER - SECTION AND VIEW F
III. 79428 DW-K00-102-A0	STARTOWER - VIEW D
IV. 79428 DW-K00-103-A0	STARTOWER - PLATFORMS PART 1
V. 79428 DW-K00-105-A0	DESIGN FOR HANDRAILING AND STAIRS

LUSS for connection to SR
SEE DWG: 79428 DW-K00-100-A0, 79428 DW-K00-101-A0, 79428 DW-K00-102-A0, 79428 DW-K00-103-A0, 79428 DW-K00-105-A0

LUSS FOR CONNECTION TO SR ARE TO BE DELIVERED WITH FITTING LENGTH AND ARE TO ADAPT AND WELD ON SITE ACCORDING TO REAL SITUATION

For all underlined welds
S
a=0,7xS
a=0,7xS
UNLESS OTHERWISE SPECIFIED

ALL SHIP-WELDS IN THIS DRAWING ACCORDING TO DIN EN ISO 2553
CLASS OF WELD QUALITY: C

GENERAL TOLERANCES FOR WELDED CONSTRUCTION ACCORDING TO EN ISO 13920 DEGREE OF ACCURACY "B"
WELDS AS PER DIN EN ISO 5817, CLASS OF WELD QUALITY: C.

ADMISSIBLE DIMENSIONAL DIFFERENCES DEGREE TOLERANCES ARE NOT SPECIFIED AS PER DIN ISO 2768
CLASS OF ACCURACY: m, K

MATERIAL	EURO CODE	CHINA
PLATE	S235JR	Q235B
PROFILE	S235JR	Q235B
TUBE	S235JR	Q235B

PREPARATION OF WELDING JOINTS ACCORDING TO DIN EN ISO 9692

BOLTED CONNECTIONS: BOLTED CONNECTIONS SHALL CONFORM TO THE REQUIREMENTS OF AISC MANUALL OF STEEL CONSTRUCTION AND TO NORMS FOR BOLTS, NUTS, WASHERS ETC.

NOTE: THE DETAIL DRAWINGS OF STEEL STRUCTURE HAS TO BE VERIFIED BY STATIC CALCULATION ALL CONNECTING ELEMENTS WITHOUT DIMENSIONS (GUSSET PLATES, NUTS, RIBS) ARE INFORMATORY HERE ONLY.

NOTE: Handrailing and stairs are designed by drawing 79428 DW-100-105-A0 Handrailing and stairs